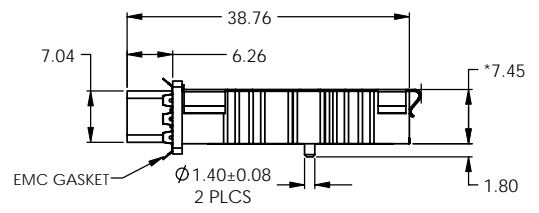
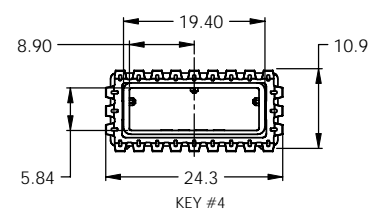
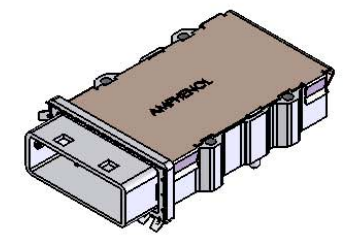
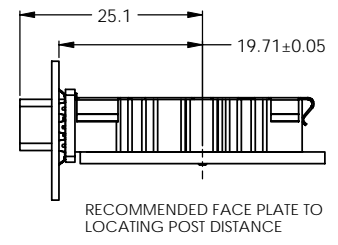
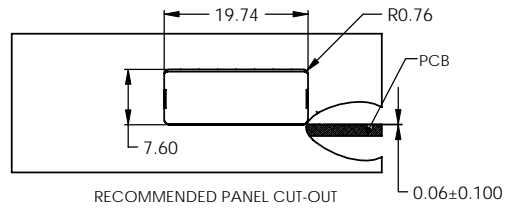
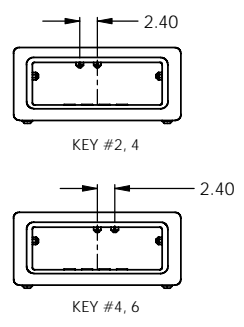
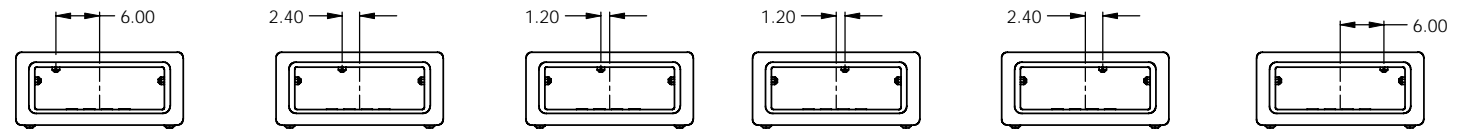
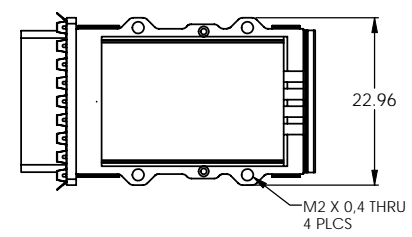
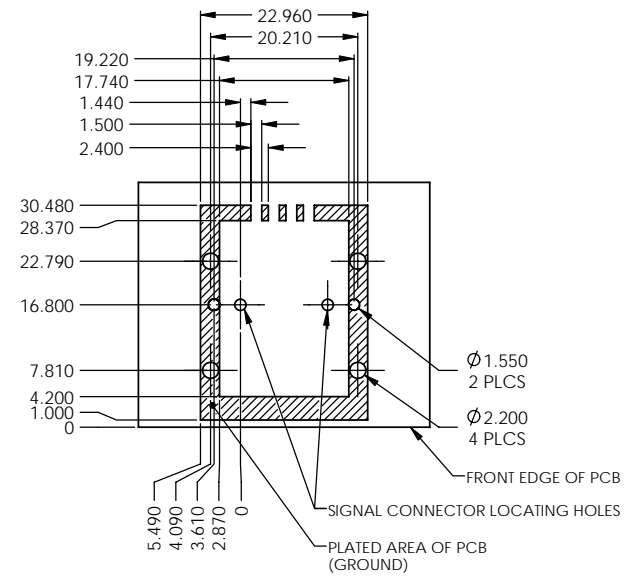


REVISIONS			
REV	ECN	DESCRIPTION	DATE APPROVED
R		CAGE COVER MATERIAL CHANGE	06/11/08 ZLJ



8
M2 X 0,4
MOUNTING SCREW
QTY 4 SUPPLIED



Key Option	Part Number	Description
0	FS1-SF1-10E1	No Key
1	FS1-SF1-11E1	SATA 'X' Cable
2	FS1-SF1-12E1	
3	FS1-SF1-13E1	
4	FS1-SF1-14E1	SAS Universal Port
5	FS1-SF1-15E1	
6	FS1-SF1-16E1	
7	FS1-SF1-17E1	SATA 'M' Cable
2,4	FS1-SF1-124E1	SAS Out Port
4,6	FS1-SF1-146E1	SAS In Port

- NOTES:
- MATERIAL:
MAIN CAGE: ZINC DIECAST SHELL WITH 150 MICROINCHES OF NICKEL PLATING
EMC GASKET: STAINLESS STEEL
COVER: STAINLESS STEEL
 - ROHS COMPLIANT
 - COMPLIES WITH SFF-8088 EXCEPT WHERE NOTED ***.



DO NOT SCALE DRAWING

RECOMMENDED PCB LAYOUT

THIS DOCUMENT CONTAINS PROPRIETARY INFORMATION AND SUCH INFORMATION MAY NOT BE DISCLOSED TO OTHERS FOR ANY PURPOSE OR USED FOR MANUFACTURING PURPOSES WITHOUT PERMISSION FROM AMPHENOL CANADA CORP.

UNLESS OTHERWISE SPECIFIED DIMENSIONS ARE IN MILLIMETERS TOLERANCES ARE: X ± .25 XX ± .10 XXX ± .05 MATERIAL AND FINISH	APPROVALS DRAWN: YK CHECKED: YK QA APP'D	DATE 06/DEC/06 06/DEC/06	Amphenol Canada Corp.
ENG. REL. NO. EAR 123XX CODE IDENT. NO. 03554	REV. C REV. APP'D	DATE: 06/DEC/06	SFF, CAGE SINGLE, SPECIAL, 0 DEGREE P-FS1-SF1-1XE1 N/S SFF
			SHEET 1 OF 1